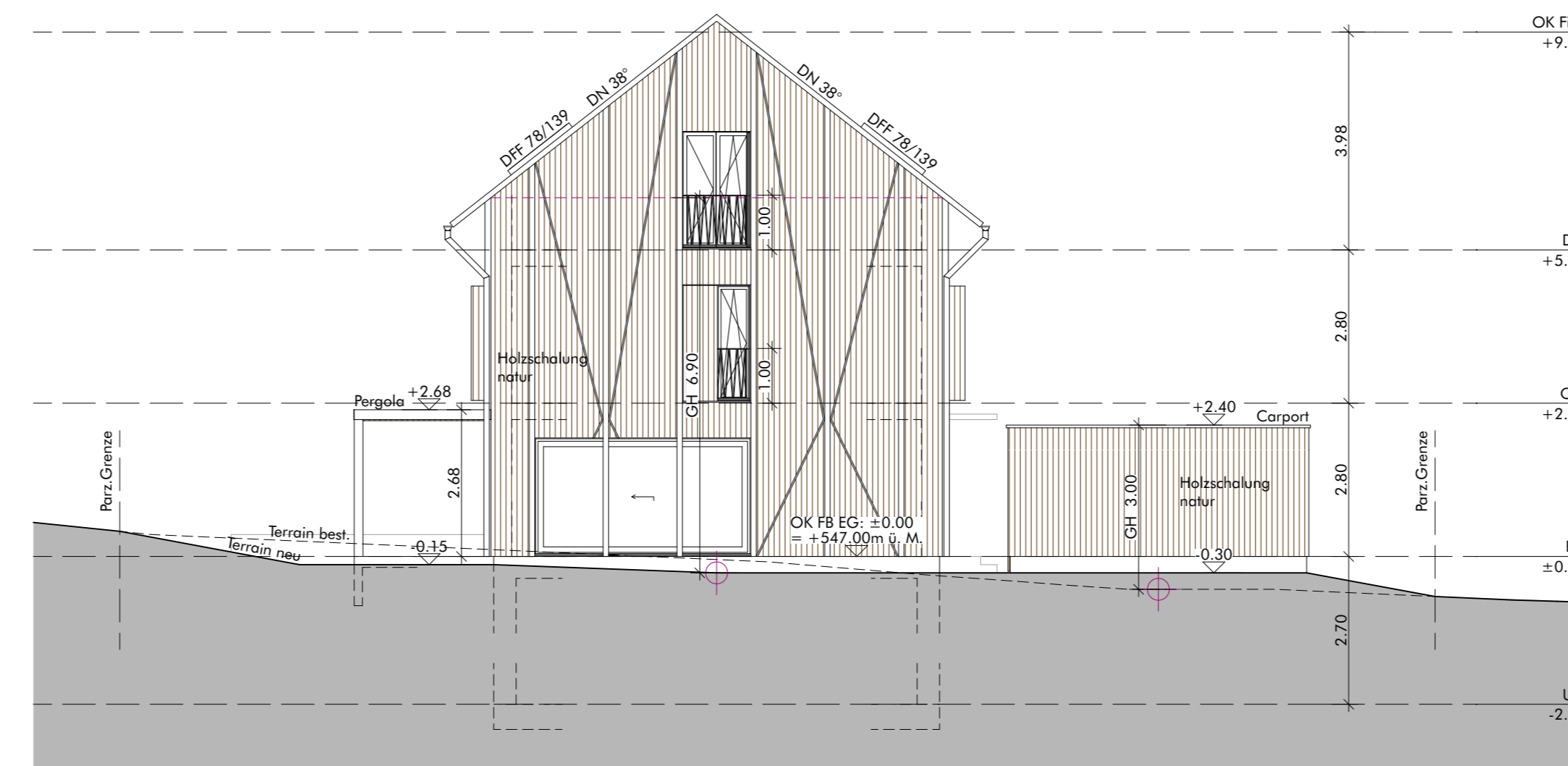
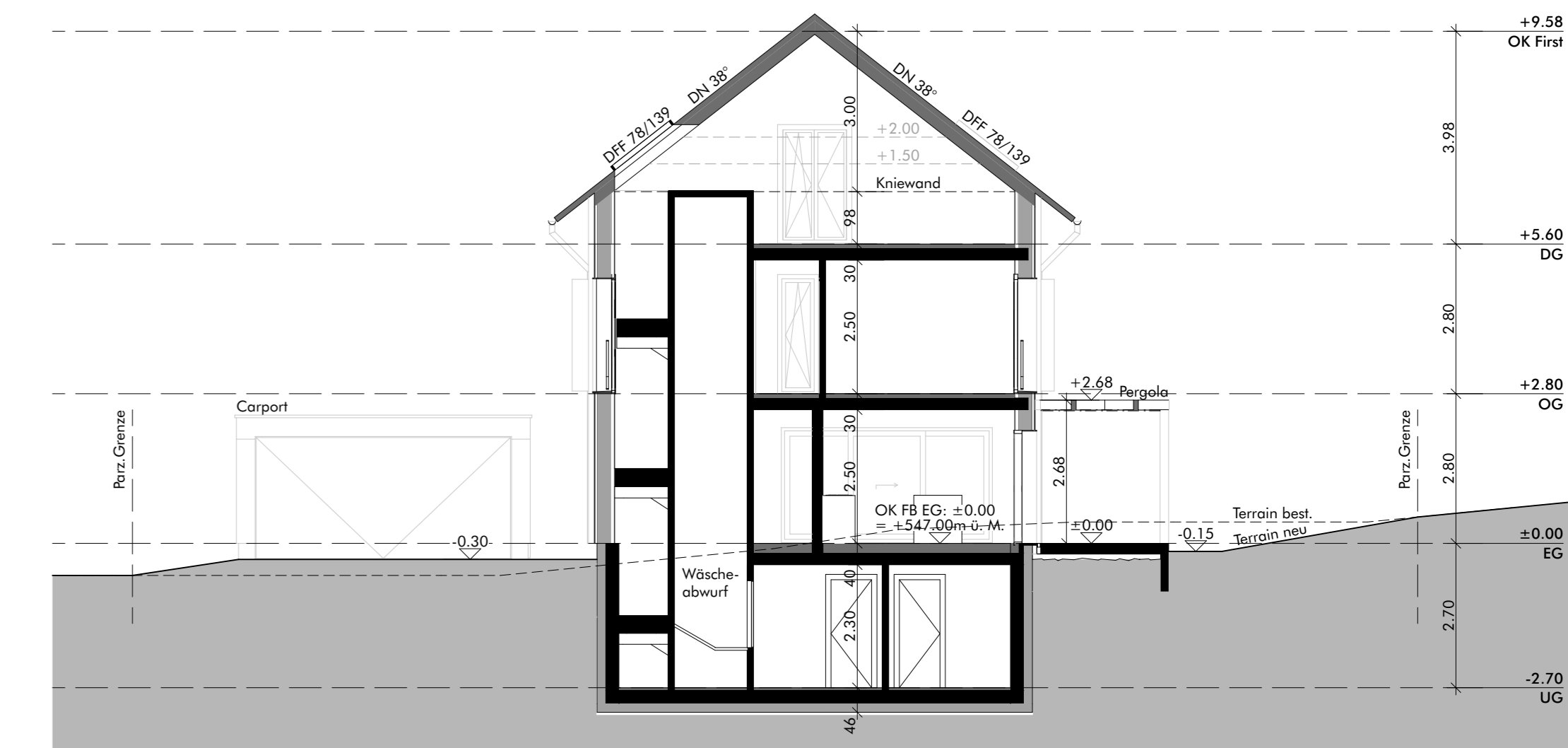


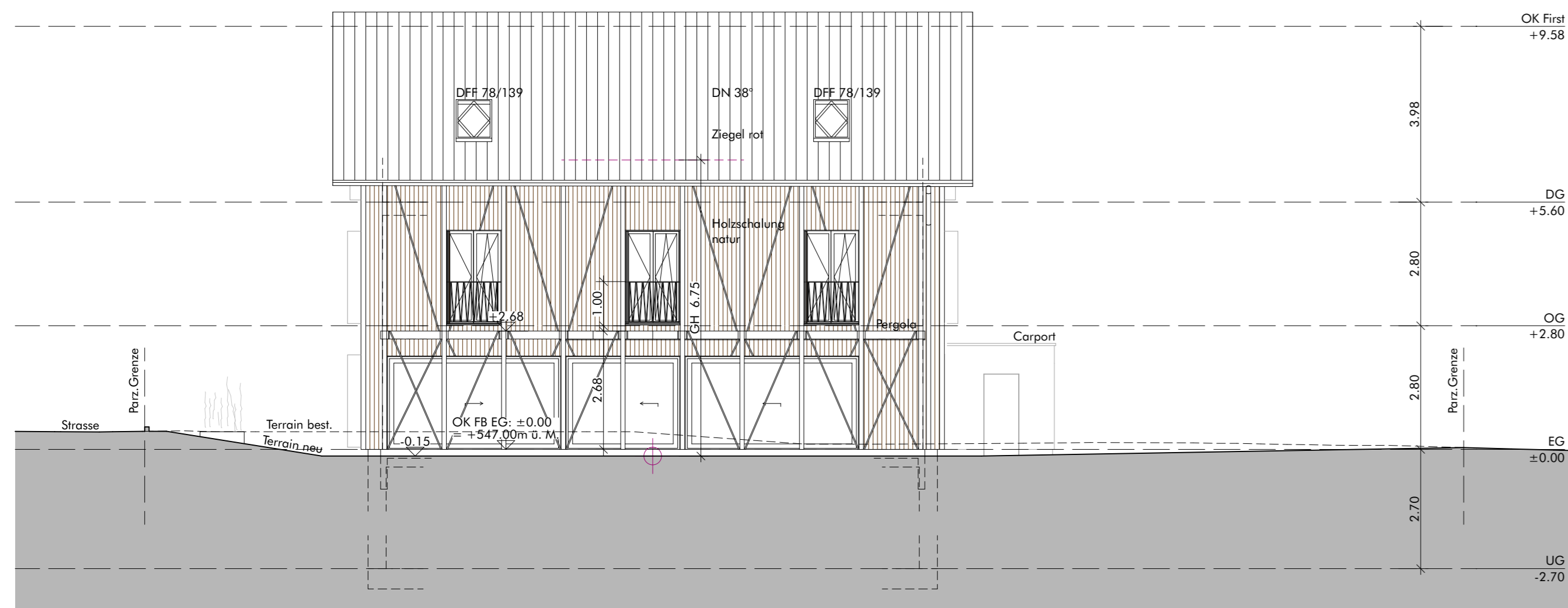
Nordfassade



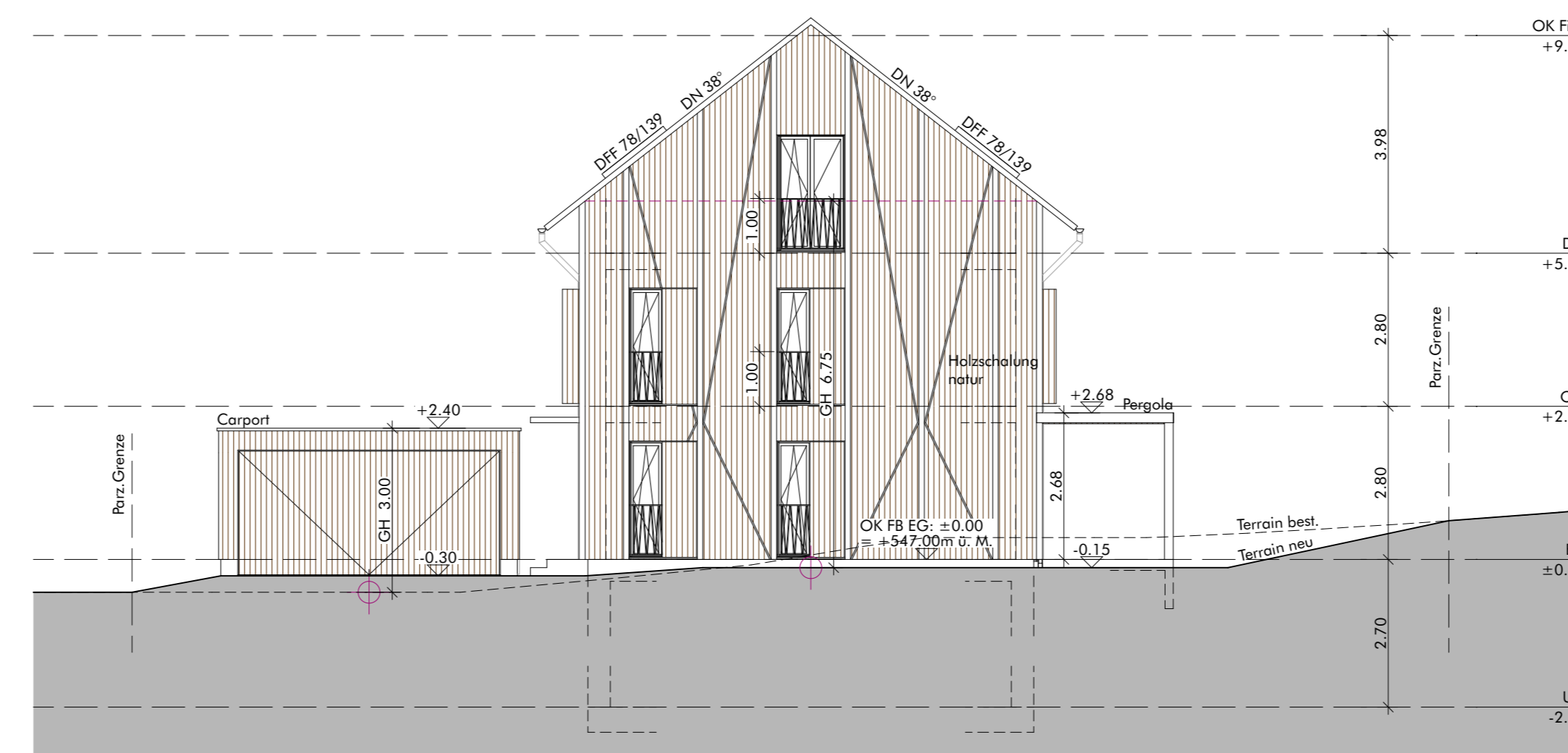
Ostfassade



Schnitt A-A



Südfassade



Westfassade

Bern,

Bauherrschaft:

Grundeigentümer:

Architekt:

OK Erdgeschoss = ±0.00 = 547.00m ü.M.
 Fixpunkt Nr. 4140846 = -1.79 = 545.21m ü.M.

Bauherrschaft
 Claus Löbner Studio
 Jungkerngasse 36
 Postfach, 3000 Bern 8
 hello@clausloebner.ch
 078 823 97 97

Objekt
 40.001 Neubau EFH Parz. Nr. 1793, 3325 Hettiswil

Baueingabe
Fassaden + Schnitt

Mst.	1:100	Gez.	set
Plannr.	40.001 / 101	Dat.	06.09.2018
Format	105 / 50	Rev.	.

