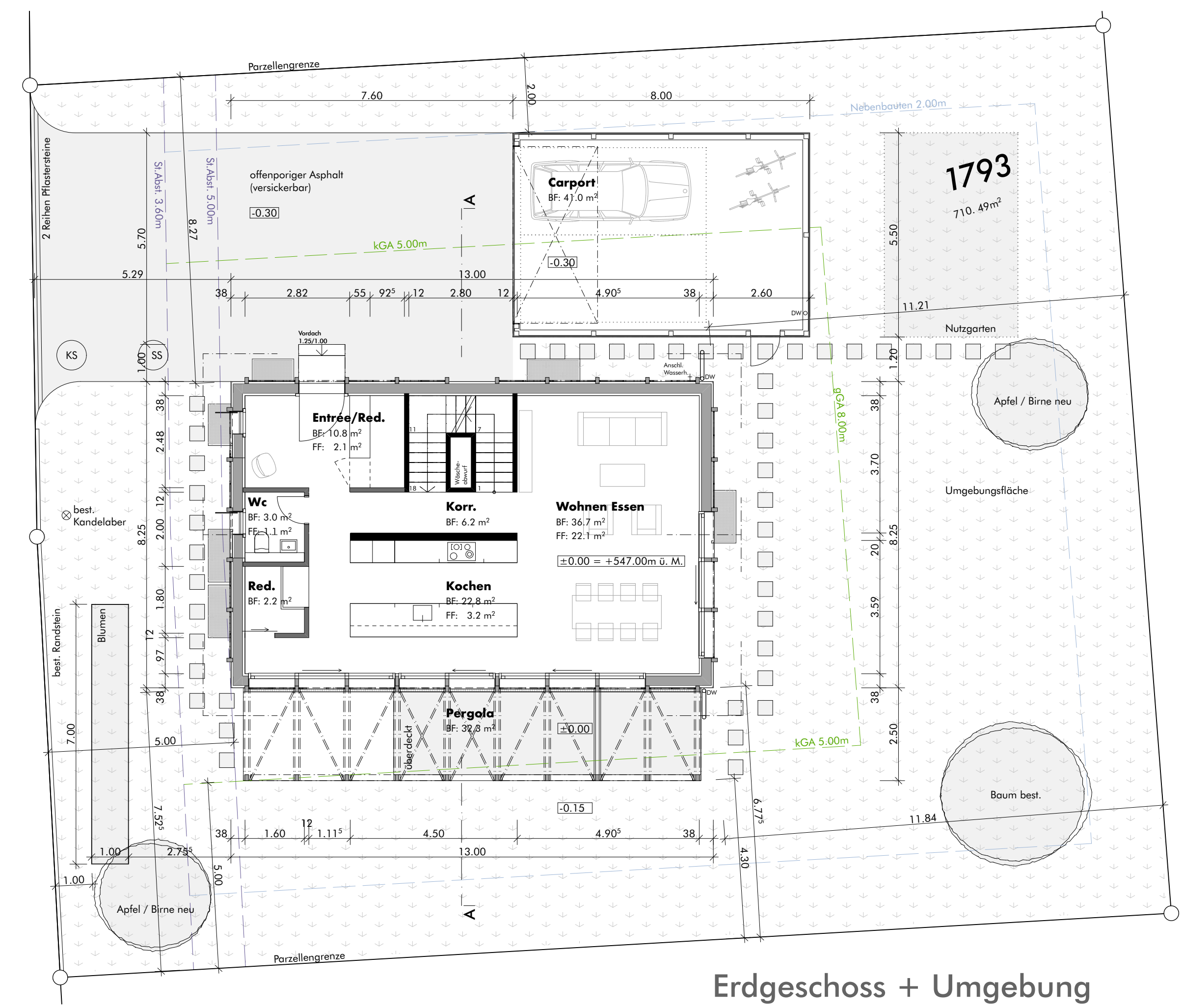
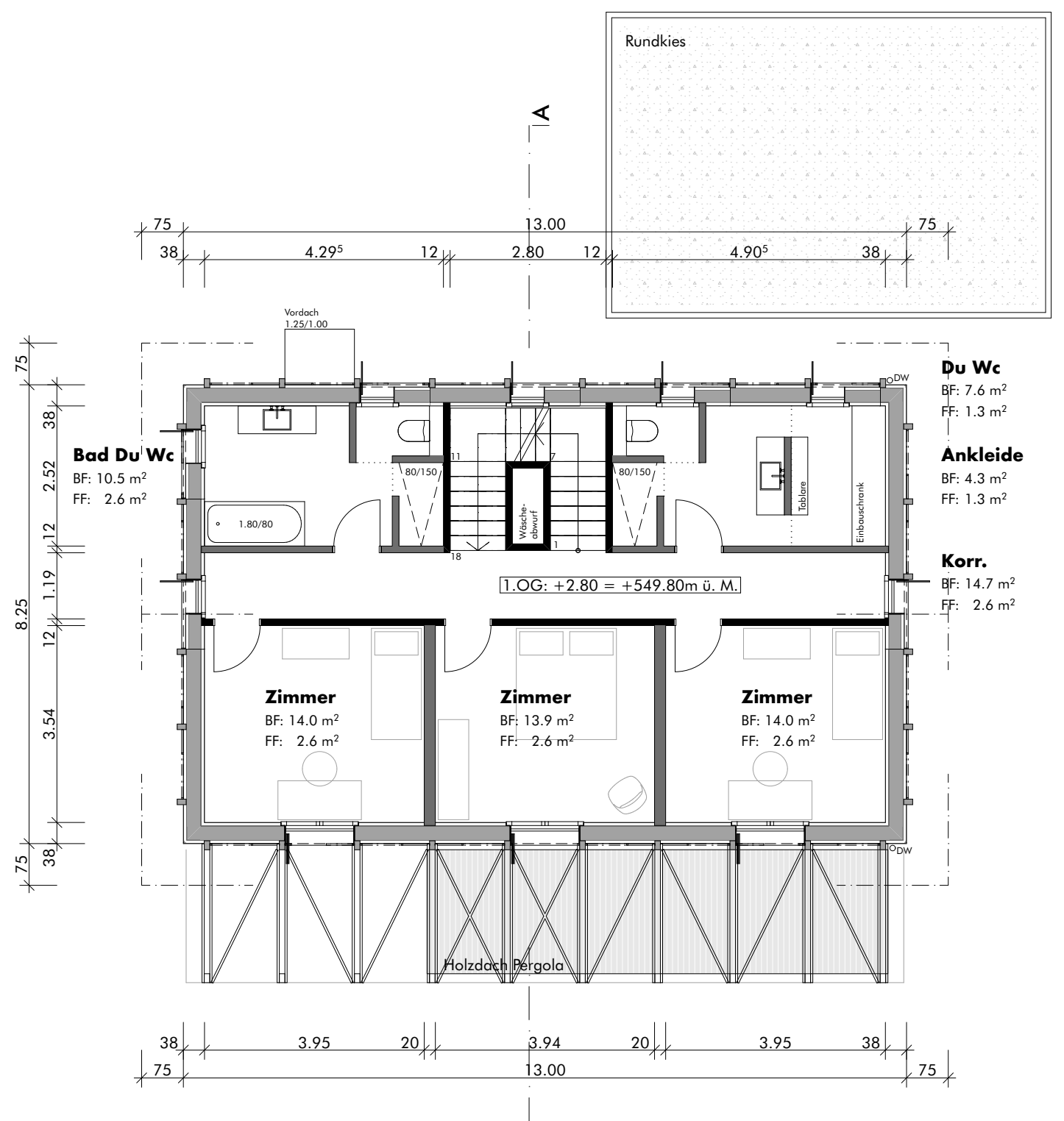


S T U T Z

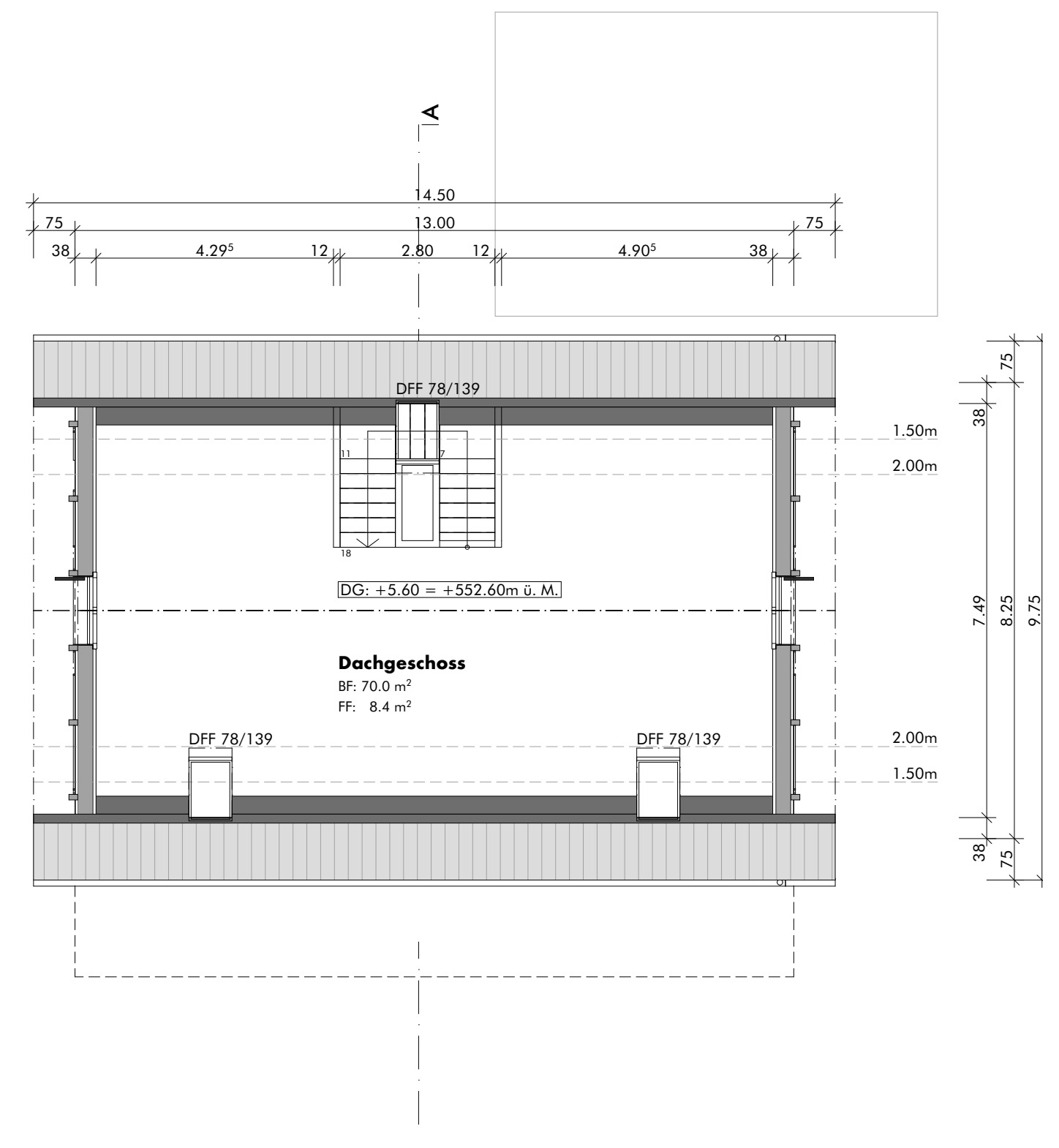
2856



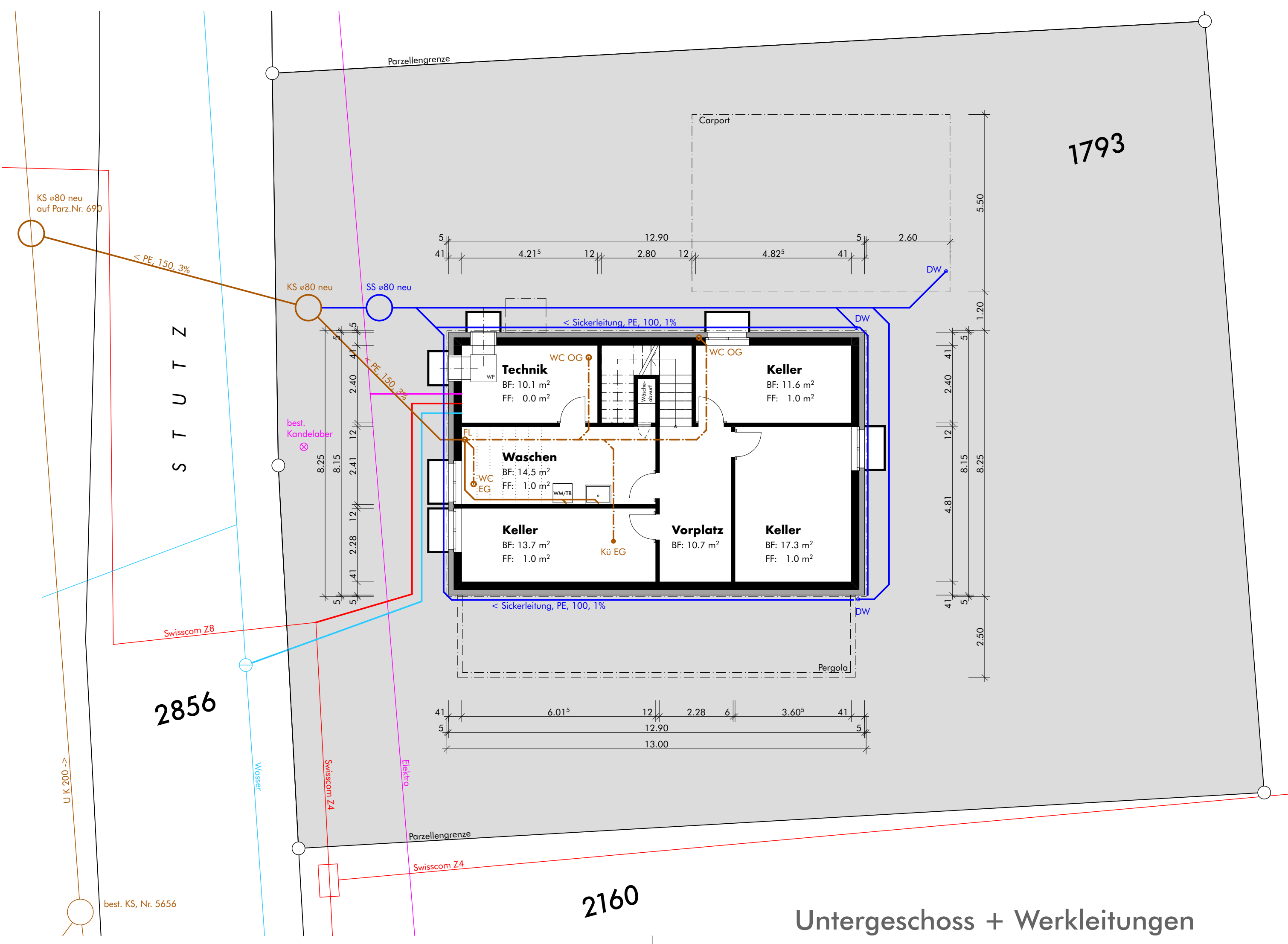
Erdgeschoss + Umgebung



1. Obergeschoss



Dachgeschoss



Untergeschoss + Werkleitungen

Legende Werkleitungen				
	Bestehend	Abbruch	Neu	in / an Decke
Schmutzabwasser	—	- - -	—	- - -
Sauberabwasser	—	- - -	—	- - -
Wasser	—	- - -	—	- - -
Elektro	—	- - -	—	- - -
Swisscom	—	- - -	—	- - -

Bern,

Bauherrschaft:

Grundeigentümer:

Architekt:

OK Erdgeschoss = ±0.00 = 547.00m ü. M.
 Fixpunkt Nr. 4140846 = -1.79 = 545.21m ü. M.

Bauherrschaft

Objekt
 40.001 Neubau EFH Parz. Nr. 1793, 3325 Heltiswil

Baueingabe
Grundrisse, Umgebung + Werkl.

Mst.	1:100	Gez.	sat
Plannr.	40.001 / 100	Dat.	06.09.2018
Format	84 / 60	Rev.	.

Claus Löbner Studio
 Jungkerngasse 36
 Postfach, 3000 Bern 8
 hello@clausloebner.ch
 078 823 97 97

CLAUS LÖBNER STUDIO
 www.clausloebner.ch